

\$950,000 - 316 Hanmore Industrial Pkwy., Harlingen

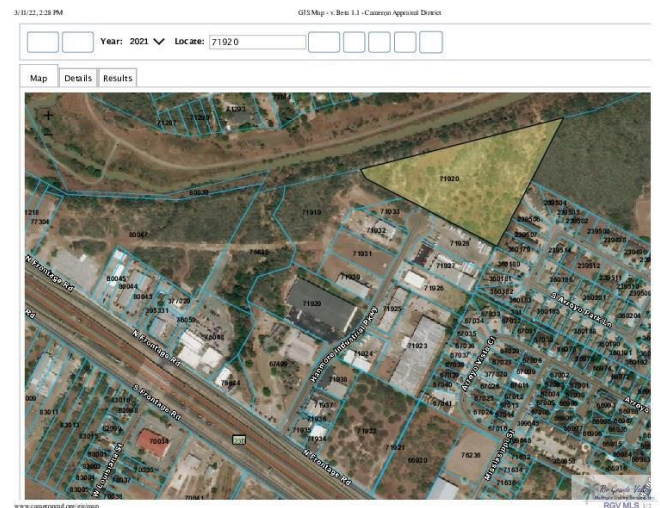
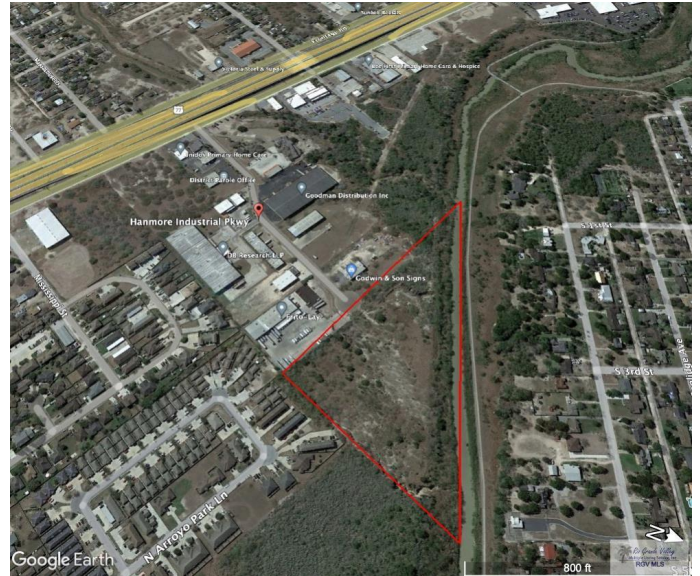
MLS® #29732964

\$950,000

Bedroom, Bathroom, 435,600 sqft
Land on 10.00 Acres

Harlingen Industrial Park No. 3, Harlingen, TX

+/- 10 Acres Industrial Land on Hanmore Industrial Parkway and Interstate 69E in Harlingen, Texas. Last available lot at Hanmore Industrial Park, Acreage is at the end of a Cul-de-sac and Zoned Industrial. City of Harlingen Water/Sewer Diagram attached for Utility Reference. 10" Water Line to cul-de-sac terminus. Acreage would also facilitate up to 5-Story Storage Units with a 50' Pole Sign for visibility to Interstate 69. Hanmore Industrial Park offers easy access from Interstate 69E and is located Mid Rio Grande Valley for easy access to adjacent cities via I69E.



Essential Information

MLS® #	29732964
Price	\$950,000
Square Footage	435,600
Square Footage	435600.00
Acres	10.00
Type	Land
Sub-Type	A,09,08
Status	Active

Community Information

Address	316 Hanmore Industrial Pkwy.
Area	Harlingen
Subdivision	Harlingen Industrial Park No. 3
City	Harlingen

County	Cameron
State	TX
Zip Code	78550

Amenities

Amenities	Hunting Privileges, Curb & Gutter
Utilities	Electricity, Public Water, Sewer, Cable TV
Features	Other-See Remarks

Exterior

Exterior Features	None
Lot Description	Gently Rolling

School Information

District	HARLINGEN C.I.S.D.
Elementary	Other
Middle	Other
High	Harlingen

Listing Details

Listing Agent	Cynthia Hopkins
Listing Office	CHRE Cindy Hopkins Real Estate

Listing information provided by Rio Grande Valley MLS. IDX Information is provided exclusively for consumers' personal, non-commercial use and may not be used for any purpose other than to identify prospective properties consumers may be interested in purchasing. Data is deemed reliable but not guaranteed accurate by the MLS.

Listing information last updated on October 15th, 2025 at 1:53pm CDT