

\$215,000 - 2219 Ella Ave., Harlingen

MLS® #29763734

\$215,000

3 Bedroom, 2.00 Bathroom, 1,610 sqft
Residential on 0.22 Acres

Park Terrace, Harlingen, TX

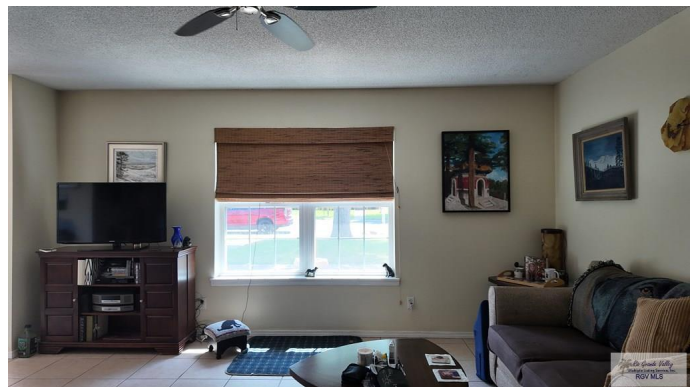
This stunning home is a hot listing! Featuring tile flooring throughout, it offers 3 spacious bedrooms, 2 bathrooms, and a 2-car garage. Upgrades in the last 9 years include: New Roof, Newer AC, New PVC plumbing, Water heater, Windows, light fixtures and fans, laminate floors in bedrooms. 2 Living areas, dishwasher, stove, microwave & fridge. Will leave washer and dryer. Enjoy the open-concept kitchen and expansive living room—perfect for entertaining. Step outside to a fully fenced backyard with plenty of space to relax or play. 2/Separate water meters. Don't miss out—schedule your tour today!

Built in 1964

Essential Information

MLS® #	29763734
Price	\$215,000
Bedrooms	3
Bathrooms	2.00
Full Baths	2
Square Footage	1,610
Acres	0.22
Year Built	1964
Type	Residential
Sub-Type	House
Status	Active

Community Information



Address	2219 Ella Ave.
Area	Harlingen
Subdivision	Park Terrace
City	Harlingen
County	Cameron
State	TX
Zip Code	78550

Amenities

Amenities	No Special Amenities
Features	None
Parking Spaces	2
Garages	Two Cars
Pool	None

Interior

Interior	Ceramic Tile
Interior Features	Built-ins
Appliances	No Conveying Appliances
Heating	Central, Electric
Stories	1

Exterior

Exterior	Brick Veneer
Exterior Features	Covered Patio, Patio Slab, See Remarks
Lot Description	Curb & Gutter
Roof	No Window Coverings
Foundation	Slab

School Information

District	HARLINGEN C.I.S.D.
Elementary	Bonham
Middle	Memorial
High	Harlingen

Listing Details

Listing Agent	Zintiha Loya
Listing Office	KELLER WILLIAMS LRGV

Listing information provided by Rio Grande Valley MLS. IDX Information is provided exclusively for consumers' personal,

non-commercial use and may not be used for any purpose other than to identify prospective properties consumers may be interested in purchasing. Data is deemed reliable but not guaranteed accurate by the MLS.
Listing information last updated on October 15th, 2025 at 8:53am CDT