

\$139,900 - 2.5 Acres Levens Way, Harlingen

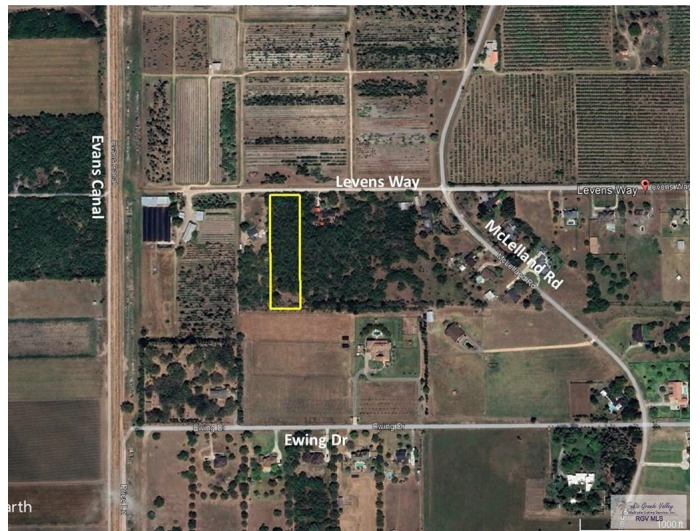
MLS® #29764493

\$139,900

Bedroom, Bathroom, 108,900 sqft
Land on 2.50 Acres

Adams Gardens, Harlingen, TX

2.5 serene acres just 1/2 mile west off Bass Blvd in a highly-sought after area in west Harlingen. This beautiful piece of land on Levens Way offers the perfect blend of country charm and convenience. Located near the beloved Granny Clare's Citrus, the property is ideal for those looking to build their dream home in a peaceful, rural setting. With farm animals allowed, you can enjoy true country living while still being just a short drive from local amenities. The land is rich with native plants and mature trees, offering the opportunity to craft a truly unique and natural landscape leading right up to your front door. Don't miss this rare chance to own a slice of tranquility in a prime location. For a flyover view of the property, please click the following link to drone footage of the land:
<https://youtu.be/w-cbKhRK8-U>



Essential Information

MLS® #	29764493
Price	\$139,900
Square Footage	108,900
Square Footage	108900.00
Acres	2.50
Type	Land
Sub-Type	A,01,09
Status	Active

Community Information

Address	2.5 Acres Levens Way
Area	Harlingen
Subdivision	Adams Gardens
City	Harlingen
County	Cameron
State	TX
Zip Code	78552

Amenities

Amenities	None
Utilities	Electricity, Well, Septic
Features	None

Exterior

Exterior Features	None
Lot Description	Level

School Information

District	HARLINGEN C.I.S.D.
Elementary	Stuart Place
Middle	Vela
High	Harlingen South

Listing Details

Listing Agent	Michelle De Hoyos
Listing Office	ROCKING K REALTY & AUCTIONS

Listing information provided by Rio Grande Valley MLS. IDX Information is provided exclusively for consumers' personal, non-commercial use and may not be used for any purpose other than to identify prospective properties consumers may be interested in purchasing. Data is deemed reliable but not guaranteed accurate by the MLS.

Listing information last updated on October 15th, 2025 at 8:08am CDT