

# \$960,000 - Na Paloma Ln, Harlingen

MLS® #29766786

**\$960,000**

Bedroom, Bathroom, 871,200 sqft  
Land on 30.00 Acres

Stuart Place Survey, Harlingen, TX

Discover the potential of this expansive 30-acre tract at the south end of Paloma Lane in Harlingen, Texas. Level and currently farmed with rich, irrigable soil, it's ideal for preserving as prime farmland or a residential subdivision. Public water available (not connected); in Irrigation District #11. Contact us to make it yours!

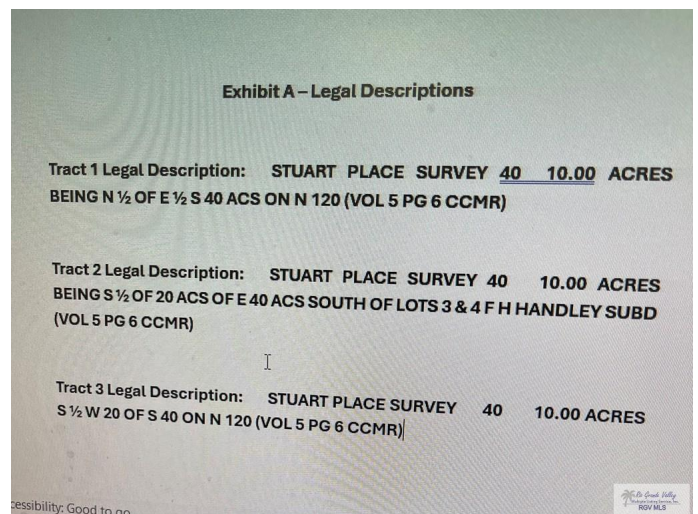
## Essential Information

MLS® #	29766786
Price	\$960,000
Square Footage	871,200
Square Footage	871200.00
Acres	30.00
Type	Land
Sub-Type	A,09
Status	Active

## Community Information

Address	Na Paloma Ln
Area	Harlingen
Subdivision	Stuart Place Survey
City	Harlingen
County	Cameron
State	TX
Zip Code	78552

## Amenities



Amenities	None
Utilities	Electricity, Public Water
Features	None

### **Exterior**

Exterior Features	None
Lot Description	Level

### **School Information**

District	HARLINGEN C.I.S.D.
Elementary	Stuart Place
Middle	Vela
High	Harlingen South

### **Listing Details**

Listing Agent	Kelly Miller
Listing Office	BAHNMAN REALTY

Listing information provided by Rio Grande Valley MLS. IDX Information is provided exclusively for consumers' personal, non-commercial use and may not be used for any purpose other than to identify prospective properties consumers may be interested in purchasing. Data is deemed reliable but not guaranteed accurate by the MLS.

Listing information last updated on October 15th, 2025 at 11:08am CDT