

\$599,000 - 2537 Los Portales Dr., Brownsville

MLS® #29768536

\$599,000

4 Bedroom, 3.50 Bathroom, 3,051 sqft

Residential on 0.40 Acres

Los Portales, Brownsville, TX

Welcome to this beautiful modern home located in the private gated community of Los Portales Subdivision, This spacious property features 4 bedrooms, 3.5 bathrooms, and a versatile office/bonus room. The open-concept design highlights high ceilings, built-in features, and ample storage throughout. A two-car garage, large backyard overlooking the resaca, and the security of gated living make this home a perfect combination of comfort and elegance.

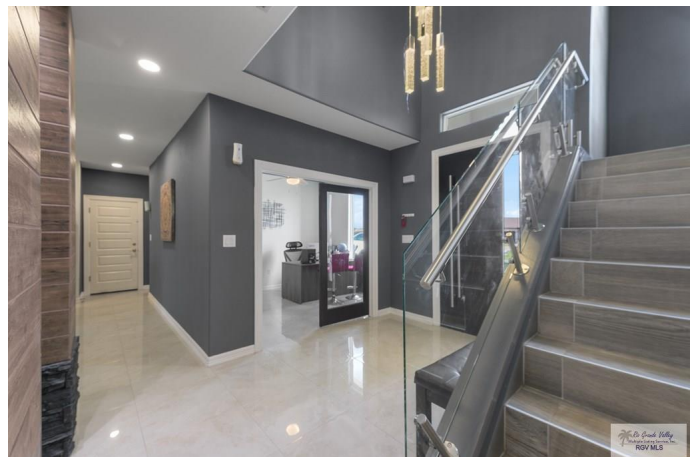
Built in 2018

Essential Information

MLS® #	29768536
Price	\$599,000
Bedrooms	4
Bathrooms	3.50
Full Baths	3
Half Baths	1
Square Footage	3,051
Acres	0.40
Year Built	2018
Type	Residential
Sub-Type	House
Status	Active

Community Information

Address	2537 Los Portales Dr.
Area	Brownsville



Subdivision	Los Portales
City	Brownsville
County	Cameron
State	TX
Zip Code	78526

Amenities

Amenities	Homeowners Association, Gated Entrance
Features	Smoke Detectors
Parking Spaces	2
Garages	Two Cars
Pool	None

Interior

Interior	Ceramic Tile
Interior Features	Ceiling Fans, Other Walk-in Closet(s), Bonus Room, Built-ins, Decorative/High Ceilings, Office/Study, Firewall
Appliances	Dishwasher, Stove/Range-Electric, Standard Refrigerator
Heating	Central
Stories	2

Exterior

Exterior	Stucco
Exterior Features	Covered Patio, Patio Slab, Resaca
Lot Description	Resaca
Roof	Mini Blinds
Foundation	Slab

School Information

District	BROWNSVILLE I.S.D.
Elementary	Gallegos
Middle	Garcia
High	Rivera

Listing Details

Listing Agent	Raul Aguilar
Listing Office	RE/MAX Elite Brownsville

Listing information provided by Rio Grande Valley MLS. IDX Information is provided exclusively for consumers' personal, non-commercial use and may not be used for any purpose other than to identify prospective properties consumers may be interested in purchasing. Data is deemed reliable but not guaranteed accurate by the MLS.

