

# \$249,000 - 635 Mesquital Ave., Brownsville

MLS® #29768881

## \$249,000

3 Bedroom, 2.00 Bathroom, 1,815 sqft  
Residential on 0.12 Acres

Mesquite Ranch, Brownsville, TX

Welcome to this STUNNING contemporary home, where modern elegance meets comfort. This home features a sleek exterior design, an open concept layout, and elegant finishes throughout. The spacious living room and dining area with luxury accents create the perfect space for entertaining. Beautiful curb appeal with manicured landscaping and a backyard perfect for having guests over, make this home truly a showstopper. Move in ready and designed to impress, schedule your showing today!

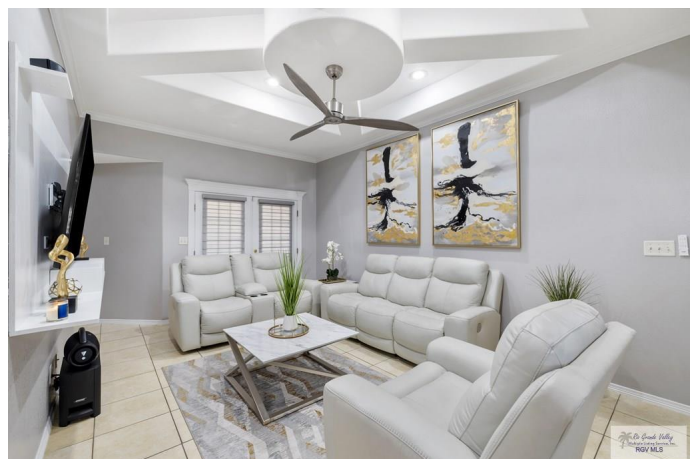
Built in 2005

## Essential Information

MLS® #	29768881
Price	\$249,000
Bedrooms	3
Bathrooms	2.00
Full Baths	2
Square Footage	1,815
Acres	0.12
Year Built	2005
Type	Residential
Sub-Type	House
Status	Active

## Community Information

Address	635 Mesquital Ave.
Area	Brownsville



Subdivision	Mesquite Ranch
City	Brownsville
County	Cameron
State	TX
Zip Code	78521

### **Amenities**

Amenities	No Special Amenities
Features	None
Garages	Attached
Pool	None

### **Interior**

Interior	Ceramic Tile
Interior Features	Ceiling Fans, Decorative/High Ceilings, Office/Study
Appliances	No Conveying Appliances
Heating	Central
Stories	1

### **Exterior**

Exterior	Brick Veneer, Stucco
Exterior Features	Other-See Remarks, See Remarks
Lot Description	None
Roof	Mini Blinds
Foundation	Slab

### **School Information**

District	BROWNSVILLE I.S.D.
Elementary	Champion
Middle	Perkins
High	Rivera

### **Listing Details**

Listing Agent	Graciela Cuevas
Listing Office	Excel Realty

Listing information provided by Rio Grande Valley MLS. IDX Information is provided exclusively for consumers' personal, non-commercial use and may not be used for any purpose other than to identify prospective properties consumers may be interested in purchasing. Data is deemed reliable but not guaranteed accurate by the MLS.

Listing information last updated on October 15th, 2025 at 12:25am CDT