

# \$165,000 - 10.04 Acres N Fm 2556, Harlingen

MLS® #29769285

**\$165,000**

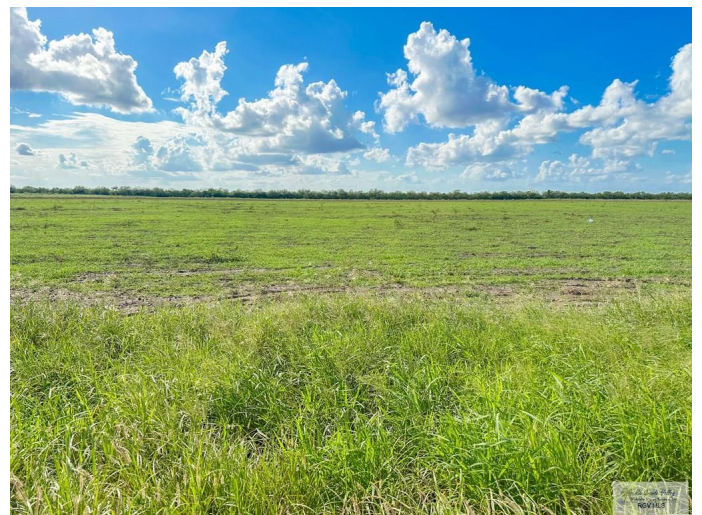
Bedroom, Bathroom, 437,342 sqft  
Land on 10.04 Acres

Cantu-solis Subdivsion, Harlingen, TX

Build your DREAM Home on this Stunning 10.04-acre tract perfectly located just 2.5 miles from Expressway 83 in La Feria! Offering the best of both worldsâ€”peaceful country living with quick access to townâ€”this property is ideal for those seeking space, privacy, and potential. The land is level, open, and ready for your custom home, family ranch, or residential development. There's ample room for a workshop, pool, or guest quarters, with utilities nearby and easy access to major roads. Enjoy beautiful sunsets, wide-open skies, and the tranquility of rural life while staying just minutes from Harlingen, Mercedes, and local amenities. The adjoining 10-acre tract is also available, making this a rare opportunity to own over 20 acres in a rapidly growing area. Perfect for your forever home or next investmentâ€”don't miss this exceptional property in the heart of La Feria!

## Essential Information

MLS® #	29769285
Price	\$165,000
Square Footage	437,342
Square Footage	437342.00
Acres	10.04
Type	Land
Sub-Type	A,09
Status	Active



**Community Information**

Address	10.04 Acres N Fm 2556
Area	La Feria
Subdivision	Cantu-solis Subdivision
City	Harlingen
County	Cameron
State	TX
Zip Code	78559

**Amenities**

Amenities	None
Utilities	Electricity, Septic, Public Water
Features	None

**Exterior**

Exterior Features	None
Lot Description	Level

**School Information**

District	LA FERIA I.S.D.
Elementary	La Feria
Middle	La Feria
High	La Feria

**Listing Details**

Listing Agent	The Krupala Team
Listing Office	KELLER WILLIAMS LRGV

Listing information provided by Rio Grande Valley MLS. IDX Information is provided exclusively for consumers' personal, non-commercial use and may not be used for any purpose other than to identify prospective properties consumers may be interested in purchasing. Data is deemed reliable but not guaranteed accurate by the MLS.  
Listing information last updated on October 15th, 2025 at 8:08am CDT