

# \$2,400,000 - 222 Kings Court, South Padre Island

MLS® #104155

**\$2,400,000**

3 Bedroom, 3.50 Bathroom, 4,053 sqft  
Residential

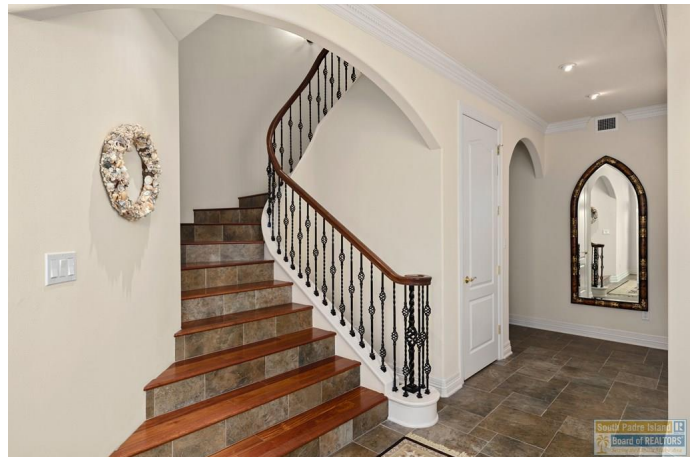
N/A, South Padre Island, TX

Embrace the opportunity to own an exclusive bayfront treasure at 222 W Kings Ct, South Padre Island, TX—a magnificent 4,053 sq ft townhome built in 2006. Tucked within the prestigious Kings Landing community, this 3-bedroom, 3.5-bath residence marries refined elegance with the laid-back charm of island life. Water access to the Laguna Madre, Gulf of Mexico, pristine beaches, lively nightlife, and premier dining, it offers stunning bay views, a private boat dock with two slips, a two-car garage, private elevator and a fully furnished interior ready for you to make your own. Perfect for peaceful retreats or vibrant gatherings, this property delivers unmatched coastal sophistication and exclusivity.

Built in 2006

## Essential Information

|                |             |
|----------------|-------------|
| MLS® #         | 104155      |
| Price          | \$2,400,000 |
| Bedrooms       | 3           |
| Bathrooms      | 3.50        |
| Full Baths     | 3           |
| Half Baths     | 1           |
| Square Footage | 4,053       |
| Year Built     | 2006        |
| Type           | Residential |
| Sub-Type       | Townhouse   |
| Status         | Active      |



## Community Information

|              |                    |
|--------------|--------------------|
| Address      | 222 Kings Court    |
| Area         | South Padre Island |
| Subdivision  | N/A                |
| Complex Name | Kings Court        |
| City         | South Padre Island |
| County       | Cameron            |
| State        | TX                 |
| Zip Code     | 78597s             |

## Amenities

|                      |                             |
|----------------------|-----------------------------|
| Amenities            | Gated                       |
| View                 | Bay View                    |
| Is Waterfront        | Yes                         |
| Waterfront           | Bay Front, Channel Frontage |
| Total Building Units | 3                           |
| Car Coverings        | Double Attached Garage      |

## Interior

|         |                  |
|---------|------------------|
| Heating | Central Electric |
|---------|------------------|

## Exterior

|                   |   |
|-------------------|---|
| Exterior Features | Balcony, Boat Dock, Water Front, Water View |
| Roof              | Tile  |

## Additional Information

|                |          |
|----------------|----------|
| Days on Market | 65       |
| Zoning         | Multi    |
| HOA Fees       | 1500     |
| HOA Fees Freq. | Annually |
| Taxes          | \$30,000 |
| Insurance      | \$0      |

## Listing Details

|                |                    |
|----------------|--------------------|
| Listing Agent  | Richard Franke Jr. |
| Listing Office | Franke Realty      |

Listing information provided by South Padre Island Board of REALTORS MLS. IDX Information is provided exclusively for consumers' personal, non-commercial use and may not be used for any purpose other than to identify prospective properties consumers may be interested in purchasing. Data is deemed reliable but not guaranteed accurate by the MLS. Date of last update 10 / 15 / 2025.